



KIA ORA E TE WHĀNAU/GREETINGS FAMILIES

Nau mai, hoki mai ki wiki kotahi. Welcome to week 1 of term 3.

I hope everyone managed well over the term break and found some time to get out in the sunshine when it was around. We have lots of exciting things happening this term. Our concept for the term is Earth and our learners will be exploring a range of learning including Earth Sciences, how we interact with the Earth and kaitiakitanga (how we care for the Earth). Our year 6 learners will be heading off to Rangitoto Island, our year 4 and 5 learners are visiting Mangere Mountain and our year 0-3 classes will be visiting the museum. We are also fortunate to have museum staff coming into school to run a program for our learners.

Our year 2 and 3 teachers start their structured literacy training, so you will see some changes if your child is in those classes. Watch out for an upcoming parent information session where we will explain more.

Our Health program this term is keeping ourselves safe. A reminder that Constable Sarah will be available tomorrow afternoon to answer any questions you have about the program.

Kia kaha, kia maia, kia manawanui
Be Strong, be brave, be determined

Noho ora mai
Amanda Bennett
Tumuaki/Principal

WHAT'S COMING UP AT RUTHERFORD

I tēnei wiki - This Week

- 22 July Start of Term 3
- 23 July Keeping Ourselves Safe Whānau information session 2.30pm - 3pm
- 23 July Board of Trustees meeting
- 24 July The Floor is Lava Auckland Museum program for year 1s
- 25 July The Floor is Lava Auckland Museum program for year 2s and 3s
- 27 July All day wananga for Kapa Haka competition group

UPCOMING EVENTS - TERM 3

- 30 & 31 July The Floor is Lava Auckland Museum program for year 4s to 6s
- 1 August Year 6 trip to Rangitoto
- 12 August Eco Warriors Garden Planting
- 12-16 August Maths week
- 14-23 August Keeping Ourselves Safe Program
- 21 August Interschool Netball
- 27 August Board of Trustees meeting
- 30 August - 27 September (Fridays) Year 3-6 Swimming at Swimsation
- 4 September New build completion celebration
- 7 September Kapa Haka competition group dress rehearsal
- 11 September Interschool Speech competition
- 16-20 September Te Wiki o te Reo Māori
- 24 September Interschool Basketball
- 24 September Board of Trustees meeting
- 27 September End of Term 3
- 14 October Start of Term 4
- 20 December Last day of Term 4

UPCOMING FUNDRAISERS

Term 3 8 September Brick Show

All details for events will be advised. If you would like to help with fundraising please contact us at office@rutherfordprimary.school.nz.

ATTENDANCE MATTERS

OVERALL TO DATE: **88%** Of the 17% of children absent,
LAST WEEK OF TERM 2: **83%** 8.6% of those were
LATE TO SCHOOL: **3.1%** absent due to illness.

This week our Whakatauki o tēnei wiki/ whakatauki of this week is;

Kia whakatōmuri te haere whakamua.

I walk backwards into the future with my eyes fixed on my past.

This Whakatauki speaks to the importance of using our learning to inform what we do in the future and to help us grow.



TO RUTHERFORD PRIMARY SCHOOL

Agassio Roopson, Khochasey Vath,
Prabhashi Nethudya Bandara,
Tanush Narayan, Hailey Fruean
and Josephine Le Page-Williams



WHAT'S ON TOP? *He aha kei runga?*



Keeping ourselves safe.

This is a program developed by The New Zealand Police. It is delivered jointly by class teachers and Police Education officer. During the program children learn how to keep themselves safe. The aims of the program are;

- teach students a range of safe practices that they can use when interacting with other people, both online and face to face
- teach students how to recognise the difference between healthy and unhealthy relationships, and encourage students who have been or are being abused to seek help
- prevent abuse by making parents and teachers more aware of their responsibilities to help students avoid abuse.

Constable Sarah will be available in the staffroom on Tuesday from 2.30pm to 3pm to answer any questions. If you are unable to make this session, but have questions, please email your questions to:

Paul O'Leary-Ryan (Curriculum Leader of Health and PE) as paulr@rutherfordprimary.school.nz

Te Kahu o te Rehia

Next term our school is hosting the local Kapa Haka competition Te Kahu o te Rehia on 23 November. This is a big event for our school. The competition is attended by 14 primary and intermediate schools from across West Auckland and brings in spectators of up to 700 people across the day. We will require many volunteers to run this event. We would greatly appreciate any support we can get from our community. Roles include marshalling, support on the door, support for groups, support for judges, people to prepare food.

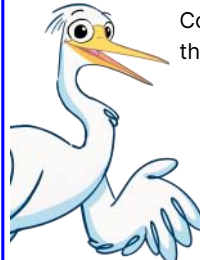
All volunteers will be provided with lunch. If you are able to help, please email amandab@rutherfordprimary.school.nz

New Classroom Block - Save the date

Our new classroom block is getting really close to completion. We expect the block to be completed around the end of August. We will be planning for an official opening in term 4, however we have arranged to hold a blessing of our new building later this term.

The blessing will be held on **Sunday 8 September at 6am**, followed by a cup of tea in the staffroom. Anybody from our school community is welcome to attend.

OUR VALUES, THE RUTHERFORD WAY



Congratulations to the following children this week who show us The Rutherford Way.

- Aubrey White
- Aryah Whippy
- Johnny Sinkovich
- Kaea McAuslan
- Evie Sinkovich



At Rutherford we show **Manaakitanga**

- We say 'kia ora' and 'hello' when we meet others.
- We reply by saying 'hello, kia ora, good morning afternoon', when someone greets us.
- We say 'please' and 'thank you'.



Congratulations 25 club Tommy, Victoria, Nania, Daniel, Leo, Mason, Elliot, Joshua, Riaan, Aria and Ryan!



Daylyn, Lily, Jane, Danica, Joshua, Elenor, Christiana, Ian, Flynn and Kyra - 50 club reward soon!

Aaria, Mila, Sofia, Riana, Mason, Eiley, Victor, Everley, Victoria, Hanni, Mia, Luotong, Matilda and Ayna.





WHAT'S BEEN HAPPENING AT RUTHERFORD



Eco Warriors trip to Hope Garden

What a fantastic day we have had on our trip to Hope Garden. It is a wonderful little place down at the end of Riverbank Rd in New Lynn. Our host Whaea Amanda and Lauren were very hospitable and knowledgeable. We learnt a lot about composting and planting. They collect a lot of food scraps from the community and local businesses and turn it into compost for their banana swales.

They have been clearing an area at the edge of the Whau River for planting flax and other appropriate plants. Once we arrived, we made a mixture of mulch and vegetable scraps for the banana swales. While a group of children were planting seedlings and pruning the grape vines the other group was clearing vines and weeding down by the mangroves. After our work we went to Olympic park for lunch and to play on the playground.

A great day had by all. Thanks so much to Shelly, Riana and Nicolette for helping out today.



Pasifika Group

Thank you to Whaea Selesa for leading this group. There are more than 50 children in this group. We need helpers who could drum, play guitar, dress the kids for performances, go with the kids to perform and moral support.

Please contact the school of on 09 8345467. All help will be appreciated.

HELP WANTED!



Ōwhanga Hub Matariki Celebration Hangi

Our tamariki cherished the chance to be part of the traditional process of preparing and witnessing the creation of the hangi.

We are incredibly grateful to Matua Mark (also known as Husband No1) and Whaea Lee for their exceptional skills in preparing and cooking the traditional Maori hangi. Their dedication ensured that everything was delivered to room 5 seamlessly. *Kōka Rayleen*



After School and Weekend Sports Available

One of our parents, Rajiv Anand (dad of Reyaansh Anand Rm 2) is available to take after school or weekend sports for our children. There is no set sport, date, or time yet. This will depend on the interest. Please contact Rajiv for further information.

Rajiv Anand 022 509 279

Rajivanand85@outlook.com



ATTENDANCE AT RUTHERFORD

Attending school every day unless sick makes a big difference to children's progress and social connection with their friends.

Our aim is to have all children at school at least 90% of the time. This means that children will have no more than 5 days off school each 10 week term. You will be contacted if attendance slips beyond 90%.

Please remember to contact us if your child is going to be absent. We need to code your child's roll according to the Ministry of Education's guidelines.

SCHOOL ABSENCES

If your child is going to be absent from school for any reason please choose one of the following options:

- [Notify an absence through the Etap Parent Portal](#)
- [Phone 834 5467 and leave a message](#)
- [Or text the school cellphone 022 324 3942](#)

If the school is not informed of your child's absence/s they will be marked as truant.

HOLIDAYS DURING TERM TIME

Please apply in writing to:

principal@rutherfordprimary.school.nz.

Please also let your child's teacher know.

Include the dates you will be absent. We will pre-code your child's attendance for those days.

These will be coded as an explained but unjustified absence.

LATE TO SCHOOL

Students who arrive after **8.50am MUST report to the school office to sign in.**

Please make your child aware that if they arrive after the bell has gone, they must report to the office to sign in avoiding the need to get in touch with parents.

LEAVING SCHOOL EARLY

Children are not permitted to leave the school grounds unless accompanied by a parent/caregiver.

The teacher and office staff must be informed and the child signed out before leaving the school grounds.

CHANGE OF ADDRESS OR DETAILS

It's really important to get in touch with you in an emergency. Please let us know any changes to your address, phone number or caregivers so we can keep our records up to date.




ezlunch.co.nz

Sushi Ami	Mondays and Thursdays
Subway	Wednesdays
Pita Pit	Tuesdays and Fridays

Menu items vary in price.
Orders made online only. No cash sales.
Orders close at 9am

IMPORTANT NOTICES

Helmets

Make sure your child wears a helmet when riding their bike or scooter to school. Bikes and scooters must be walked across pedestrian crossings and in the school grounds.

Road safety

We remind you not to stop on yellow lines or drop off in driveways as this becomes a safety hazard for our children.

Parking

Parents and caregivers are permitted to park at the church on Old Te Atatu Road and walk the short distance to school. Please arrange a meeting spot after school with your child/ren.

The school carpark is for staff, visitors and contractors only.

Late to pick up your child/ren

Please phone the school office if you are stuck in traffic or are going to be late. We can arrange for your child to come to the library to wait for you. Siblings of Rutherford College students get picked up from the library.

Dropping off lunches, hats, drink bottles

Drop belongings into the office for your child and we will call for them to collect at an appropriate time. Sometimes they may be in another class or in the swimming pool.

