



Rutherford
Primary
School



25 MARCH 2024
25 Poutū-te-rangi 2024

KIA ORA E TE WHĀNAU/GREETINGS FAMILIES

Nau mai, haere mai. Welcome to week 8 of term 1, 2024. With Easter falling this coming weekend, we have two short weeks. This week school will be closed on Friday for Good Friday and next week, school will be closed Monday and Tuesday for Easter Monday and please note that schools close for Easter Tuesday also.

If you are travelling over the long weekend I wish you safe travels. If you are staying local, please make feel free to make use of the school grounds for a place to bring the children to play.

This week our Whakatauki o tēnei wiki/ whakatauki of this week is;
'Kāore te kūmara e kōrero mō tōna ake reka,
The kūmara does not speak of his own sweetness

A proverb referring to staying humble and speaking positively of others.

WHAT'S ON TOP? *He aha kei runga?*

Paid Union Meetings

Thank you for your support of the paid union meetings for our staff today. It was our aim to keep disruption to a minimum for our whānau. Your child will have had a different teacher for a period of time today while their own teacher attended a union meeting.

Noho ora mai
Amanda Bennett
Tumuaki/Principal

WHAT'S BEEN HAPPENING AT RUTHERFORD

I tērā wiki - Last week

Fire Drill

Last week we held a fire drill. We carry out a fire drill each term to ensure that staff and children are well prepared and know exactly what to do in the event of a fire. Our children responded well and we are pleased with how the drill went.

Bat First

Last week, we went to bat first. We learned to balance the ball on the bat and then we had a competition to see who could balance the ball the longest. We also tried to do little hits and then we use the bat to bounce the ball. We were able to take home a bag with a bat we decorated and our own ball. We recommend bat first because it was a fun way to experience how to use a bat and ball.

Room 2: Esther, Autumn, Georgia, Emma



WHAT'S COMING UP AT RUTHERFORD

I tēnei wiki - This Week

- 25 March Paid Union Meetings
- 26 March Rutherford Board of Trustees meeting
- 28 March Easter raffle drawn
- 29 March - 2 April Easter (School opens Wed 3 April)

UPCOMING EVENTS - TERM 1

- 3 April Interschool Ki o Rahi (yrs 5-6)
- 5 April Firewise for years 1-3
- 6 April Kōtuku Rerengātahi performance
Oceans & Origins Kids art festival
- 11 April School Assembly
- 12 April End of Term 1
- 29 April Start of Term 2
- 9 May New to Rutherford Powhiri
- 13-14 May NZSO Music Experience (whole school)

Other events may be added as the term progresses. Hubs will send notices for upcoming events through the parent portal.

WELCOME TO SCHOOL



Kalia Watts-Ikitule and Luotong Zhang

UPCOMING FUNDRAISERS

- 6 March Easter Raffle Tickets On Sale
- 28 March Easter Raffle Drawn
- 8 September Brick Show

ATTENDANCE MATTERS

- OVERALL TO DATE: **90%** Of the 8% of children absent,
- LAST WEEK: **92%** **3.8%** of those were absent due to illness.
- LATE TO SCHOOL: **1.8%**



WHAT'S BEEN HAPPENING AT RUTHERFORD

I tērā wiki - Last week

Lighting Fires - rooms 1 and 2

We have been lighting fires! We brought to life our knowledge of fuels, spark and oxygen, and our understandings of fire safety in a real life marshmallow roasting context.

We worked collaboratively to collect leaf litter, tinder and kindling, sorting and organising these into piles. We built a fire in a stainless steel bowl and used a flint, and some vaseline on a cotton ball to light the fire.

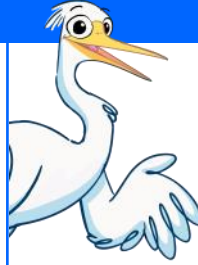
The perseverance that we demonstrated was tremendous, but we did it!! We then celebrated our accomplishments by roasting a marshmallow.

Special thanks to our tuakana from Room 18 that helped us today, (Kairo, Jason, Audrey and Flynn) and to Aaron, Matua Shaun, and Whaea Sharon who supported safety.

For many children this was the first time that they have had a go at lighting a fire, let alone using a flint. It has been a truly amazing day full of awe and pride.



CAUGHT BEING GOOD



Congratulations to the following children who were caught being good last week:

- Esther Allpress
- Whitney Bruffy
- Viyaan Chaudhary
- Everly Slade
- Hanni Gilmore



This week our focus is to *Walk and Talk our school value Ako.*



We will:

- Discuss the concept of Ako.
- Discuss what Ako looks like, feels like and sounds like in our classrooms and outside.
- Spot ones who walk and talk Ako and reward and praise them.

WHANAU READERS NEEDED

CALLING WHANAU READERS!

Can you spare any time or day during the week to help our tamariki?

We need volunteers to listen to our tamariki read.

If you are available Monday, Tuesday, Thursday or Friday between 9:15 and 10:30 please let Arlene know at

arlenec@rutherfordprimary.school.nz



DENTAL SERVICES



The Auckland Regional Dental Service (ARDS) is a Te Whatu Oraoperated service, which provides **FREE dental care to children across greater Auckland.**

To find out more information about ARDS, please visit ards.co.nz or call 0800 TALK TEETH (0800 825 583).



Easter Raffle

Thank you so much for all your donations! There are still more coming in and we are adding to the hampers every day. There are spare tickets at the office if you want to purchase more.
Closing Date for entries 27th March at 3pm—Prizes drawn 28th March at 12noon
Winners will be notified by phone/email.





**Rutherford
Primary
School**



25 MARCH 2024
25 Poutū-te-rangi 2024

ATTENDANCE AT RUTHERFORD

Attending school every day unless sick makes a big difference to children's progress and social connection with their friends.

Our aim is to have all children at school at least 90% of the time. This means that children will have no more than 5 days off school each 10 week term. You will be contacted if attendance slips beyond 90%.

Please remember to contact us if your child is going to be absent. We need to code your child's roll according to the Ministry of Education's guidelines.

SCHOOL ABSENCES

If your child is going to be absent from school for any reason please choose one of the following options:

- [Notify an absence through the Etap Parent Portal](#)
- [Phone 834 5467 and leave a message](#)
- [Or text the school cellphone 022 324 3942](#)

If the school is not informed of your child's absence/s they will be marked as truant.

HOLIDAYS DURING TERM TIME

Please apply in writing to:

principal@rutherfordprimary.school.nz

Please also let your child's teacher know.

Include the dates you will be absent. We will pre-code your child's attendance for those days.

These will be coded as an explained but unjustified absence.



LATE TO SCHOOL

Students who arrive after **8.50am MUST report to the school office to sign in.**



Please make your child aware that if they arrive after the bell has gone, they must report to the office to sign in avoiding the need to get in touch with parents.

LEAVING SCHOOL EARLY

Children are not permitted to leave the school grounds unless accompanied by a parent/caregiver.

The teacher and office staff must be informed and the child signed out before leaving the school grounds.

CHANGE OF ADDRESS OR DETAILS

It's really important to get in touch with you in an emergency. Please let us know any changes to your address, phone number or caregivers so we can keep our records up to date.



ORDER school lunches ONLINE...
delivered to school

GF & vegetarian options

ezlunch.co.nz

- | | |
|-----------|-----------------------|
| Sushi Ami | Mondays and Thursdays |
| Subway | Wednesdays |
| Pita Pit | Tuesdays and Fridays |

Menu items vary in price.
Orders made online only. No cash sales.
Orders close at 9am

IMPORTANT NOTICES



Helmets

Make sure your child wears a helmet when riding their bike or scooter to school. Bikes and scooters must be walked across pedestrian crossings and in the school grounds.

Road safety

We remind you not to stop on yellow lines or drop off in driveways as this becomes a safety hazard for our children.

Parking

Parents and caregivers are permitted to park at the church on Old Te Atatu Road and walk the short distance to school. Please arrange a meeting spot after school with your child/ren.

The school carpark is for staff, visitors and contractors only.

Late to pick up your child/ren

Please phone the school office if you are stuck in traffic or are going to be late. We can arrange for your child to come to the library to wait for you. Siblings of Rutherford College students get picked up from the library.

Dropping off lunches, hats, drink bottles

Drop belongings into the office for your child and we will call for them to collect at an appropriate time. Sometimes they may be in another class or in the swimming pool.