



Rutherford
Primary
School



18 MARCH 2024
18 Poutū-te-rangi 2024

KIA ORA E TE WHĀNAU/GREETINGS FAMILIES

Nau mai, haere mai. Welcome to week 7 of term 1, 2024. We had a wonderful week at Rutherford last week, with lots of great things happening. We are looking forward to welcoming Bat First for our year 3 and 4 children this week.

Each week we are sharing a whakatauki of the week with our tamariki. This is a good way for our children to learn about metaphor. Children spend time understanding the message behind the whakatauki and learning some Te Reo Māori in context in the process.

This week our Whakatauki o tēnei wiki/ whakatauki of this week is; *'Tāku ahi tūtata, tāku mata kikoha. Tāku ahi mamao, tāku mata kiporo'* A proverb referring to keeping close to one's passion (fire) in order to be skilled or adept (sharp). The further away from the fire the more uninterested one becomes.

WHAT'S ON TOP? *He aha kei runga?*

Ongoing parking issues at drop off and pick up

Thank you to everyone who has been taking the time to offer support in a bid to resolve these issues. We appreciate that a number of these issues are caused by construction traffic in the area. I want to acknowledge our own construction team who have excellent traffic management plans in place particularly around drop off and pick up time.

In the coming weeks we have arranged a meeting with the local community board and Auckland transport to identify ways we can resolve this problem. I look forward to working together on a solution to improve safety for our children.

In the meantime I urge you to please refrain from parking on yellow lines to drop off and pick up your children as it severely cuts down visibility at the crossing points. A reminder that there is lots of parking on Old Te Atatu Road and you are also welcome to park at the baptist church on Old Te Atatu Road and walk the short distance to school.

School communication and school app

There are still a few families who have not accessed the school app. You can access this via mobile devices and computers.

If you need any help getting connected, please email office@rutherfordprimary.school.nz and we will arrange a time to help get you set up. This is our main communication tool and the following information is shared on this platform;

- Learning stories and information about what your children are doing in class each week on the class blog.
- School newsletter
- School notices about activities happening at school and information you need to have
- Teacher messages including reminders about things children need to bring to school
- Notices about trips and activities and permission slips for these activities

Noho ora mai
Amanda Bennett
Tumuaki/Principal

WHAT'S COMING UP AT RUTHERFORD

I tēnei wiki - This Week

19-20 March Years 3-4 Bat First Cricket

UPCOMING EVENTS - TERM 1

26 March	Board of Trustees Meeting
29 March-2 April	Easter (School opens Wednesday 3 April)
3 April	Interschool Ki o Rahi (yrs 5-6)
5 April	Firewise for years 1-3
6 April	Kōtuku Rerengātahi performance Oceans & Origins Kids art festival
11 April	School Assembly
12 April	End of Term 1
29 April	Start of Term 2

Other events may be added as the term progresses. Hubs will send notices for upcoming events through the parent portal.

WELCOME TO SCHOOL



Rayan Koku Hannadige and Eleanor Clark

UPCOMING FUNDRAISERS

6 March	Easter Raffle Tickets On Sale
28 March	Easter Raffle Drawn
8 September	Brick Show

ATTENDANCE MATTERS

OVERALL TO DATE:	90%	Of the 10% of children absent,
LAST WEEK:	90%	4.4% of those were absent due to illness.
LATE TO SCHOOL:	2%	

QUOTE OF THE WEEK

"Be a pineapple. Stand tall, wear a crown, and be sweet on the inside".

WHAT'S BEEN HAPPENING AT RUTHERFORD

I tērā wiki - Last week

Interschool Athletics Day

We're excited to report that the highly anticipated interschool athletics event, where students from all our local primary schools came together to showcase their athletic talents, went off successfully on Wednesday of last week! Hosted at Rutherford College, this event promised to be a day filled with sportsmanship, camaraderie, and spirited competition, and it did not disappoint. We extend our heartfelt appreciation to all the participants for their dedication, hard work, and courage to give their best in every event. A special thank you goes out to Gill and the College Sports committee for their exceptional efforts in organising and seamlessly running the day, ensuring its success and creating lasting memories for all involved.

We are pleased to announce that Rutherford finished 3rd overall, and extend our congratulations to Matipo for their first place finish.

Paul O'Leary-Ryan

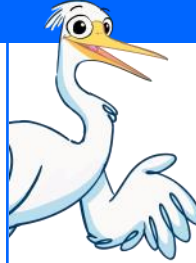
Mandarin Tree Planting

Huge thank you to Crest Clean for donating 2 mandarin trees last week. Our Eco Warrior were involved in planting them. Our school orchard is looking healthy and plentiful. This is also thanks to Whaea Shaz and her natural green thumb.

Vikki McRae



CAUGHT BEING GOOD



Congratulations to the following children who were caught being good last week:

- Viaan Kumar
- Victor Bryant
- Ada-Marie Enosa
- Ryan Byles
- Riana Dawe



This week our focus is to **Walk and Talk our school value Turangawaewae.**



We will:

- Discuss the concept of turangawaewae.
- Discuss what turangawaewae looks like, feels like and sounds like in our classrooms and outside.
- Spot ones who walk and talk turangawaewae and reward and praise them.

WHANAU READERS NEEDED

CALLING ALL GRANDPARENTS!

Can you spare any time or day during the week to help our tamariki?

We need volunteers to listen to our tamariki read.

If you are available Monday, Tuesday, Thursday or Friday between 9:15 and 10:30 please let Arlene know at

arlenec@rutherfordprimary.school.nz



DENTAL SERVICES



The Auckland Regional Dental Service (ARDS) is a Te Whatu Ora operated service, which provides **FREE dental care to children across greater Auckland.**

To find out more information about ARDS, please visit ards.co.nz or call 0800 TALK TEETH (0800 825 583).

WHAT'S BEEN HAPPENING AT RUTHERFORD

I tērā wiki - Last week

North Harbour Softball

We're thrilled to say that North Harbour Softball returned to us here at Rutherford School to impart their expertise to our He Kūaka Mārangaraga students in the past week! And it was once again a huge success. During the sessions, our students had the opportunity to learn fundamental softball skills, including fielding, base running, and hitting, under the guidance of experienced coaches. These sessions not only focused on skill development but also incorporated fun games to showcase and reinforce what they had learned.

We extend our heartfelt thanks to Ethan and Brock for generously sharing their time and skills with our students, providing them with invaluable learning experiences on the softball field. *Paul O'Leary-Ryan*



Watts and Hughes Site Visit

The team at Watts and Hughes showed us around the new building site on Friday. The children (and teachers) were excited as we put on their hard hats and vests. They then watched a virtual walk-through video of the finished building and made their way out to the work site.

Watts and Hughes made a huge effort to prepare the site for our visit and made ramps and put up safety tape so the children could walk around safely as a group.

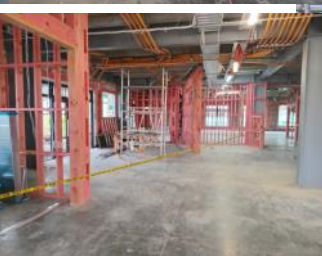
We then went upstairs and waved to our friends below and were lucky to have a sausage sizzle kindly donated by Placemakers when we returned.

Huge thanks to the Watts and Hughes team, it was the best Friday afternoon! We can't wait until the opening day!



Kōtuku Rerengātahi trip to Matipo

Our Kōtuku Rerengātahi ākonga enjoyed a visit to Matipo primary school. Our ākonga led the pōwhiri as manuhiri, learned and shared waiata, ate kai and played together. Thank you to Matipo Primary School for hosting us and our wonderful parent helpers for their support. *Whaea Teana*





**Rutherford
Primary
School**



18 MARCH 2024
18 Poutū-te-rangi 2024

ATTENDANCE AT RUTHERFORD

Attending school every day unless sick makes a big difference to children's progress and social connection with their friends.

Our aim is to have all children at school at least 90% of the time. This means that children will have no more than 5 days off school each 10 week term. You will be contacted if attendance slips beyond 90%.

Please remember to contact us if your child is going to be absent. We need to code your child's roll according to the Ministry of Education's guidelines.

SCHOOL ABSENCES

If your child is going to be absent from school for any reason please choose one of the following options:

- [Notify an absence through the Etap Parent Portal](#)
- [Phone 834 5467 and leave a message](#)
- [Or text the school cellphone 022 324 3942](#)

If the school is not informed of your child's absence/s they will be marked as truant.

HOLIDAYS DURING TERM TIME

Please apply in writing to:

principal@rutherfordprimary.school.nz

Please also let your child's teacher know.

Include the dates you will be absent. We will pre-code your child's attendance for those days.

These will be coded as an explained but unjustified absence.



LATE TO SCHOOL

Students who arrive after **8.50am MUST report to the school office to sign in.**



Please make your child aware that if they arrive after the bell has gone, they must report to the office to sign in avoiding the need to get in touch with parents.

LEAVING SCHOOL EARLY

Children are not permitted to leave the school grounds unless accompanied by a parent/caregiver.

The teacher and office staff must be informed and the child signed out before leaving the school grounds.

CHANGE OF ADDRESS OR DETAILS

It's really important to get in touch with you in an emergency. Please let us know any changes to your address, phone number or caregivers so we can keep our records up to date.



ezlunch.co.nz

Sushi Ami Mondays and Thursdays
Subway Wednesdays
Pita Pit Tuesdays and Fridays

Menu items vary in price.

Orders made online only. No cash sales.

IMPORTANT NOTICES



Helmets

Make sure your child wears a helmet when riding their bike or scooter to school. Bikes and scooters must be walked across pedestrian crossings and in the school grounds.

Road safety

We remind you not to stop on yellow lines or drop off in driveways as this becomes a safety hazard for our children.

Parking

Parents and caregivers are permitted to park at the church on Old Te Atatu Road and walk the short distance to school. Please arrange a meeting spot after school with your child/ren.

The school carpark is for staff, visitors and contractors only.

Late to pick up your child/ren

Please phone the school office if you are stuck in traffic or are going to be late. We can arrange for your child to come to the office to wait for you. Siblings of Rutherford College students get picked up from the office.

Dropping off lunches, hats, drink bottles

Drop belongings into the office for your child and we will call for them to collect at an appropriate time. Sometimes they may be in another class or in the swimming pool.