



**Rutherford  
Primary  
School**



**26 FEBRUARY 2024**  
**26 Hui-tanguru 2024**

## KIA ORA E TE WHĀNAU/GREETINGS FAMILIES

Nau mai, haere mai. Welcome to week 4 of term 1, 2024. A huge thank you to all the families who were able to join us at the Te Ahi Ora evenings on Thursday and Friday. It was wonderful seeing our tamariki and whānau giving it a go. I'd like to extend thanks to the team from Te Ahi Ora for providing us with this opportunity and to Whaea Jules and Matua Paul for arranging this exciting learning opportunity for our tamariki.

This opportunity was part of our term 1 learning Ahi-Fire, We connect to ignite. Our children are learning that; Ignition is a process in which something begins, a catching on fire. Certain aspects have to connect and work together for ignition to happen. This understanding extends to many contexts such as igniting learning.

***Tāku ahi tūtata, tāku mata kikoha. Tāku ahi mamao, tāku mata kiporo***

A proverb referring to keeping close to one's passion (fire) in order to be skilled or adept (sharp). The further away from the fire the more uninterested one becomes.

This week along with lots of really great learning, we are looking forward to our school athletics day on Thursday.



## WHAT'S COMING UP AT RUTHERFORD

### *I tēnei wiki - This Week*

<b>26 February</b>	Board Meeting 5-6pm
<b>27 February</b>	Interschool Softball (yrs 5-6)
<b>29 February</b>	School Athletics Day

### UPCOMING EVENTS - TERM 1

<b>11-13 March</b>	Years 4-6 North Harbour Softball
<b>13 March</b>	Interschool Athletics (yrs 5-6)
<b>14 March</b>	Children's building site visit
<b>19-20 March</b>	Years 3-4 Bat First Cricket
<b>24 March</b>	Krypton Factor
<b>27 March</b>	Year 6 Future Leaders Day
<b>29 March-2 April</b>	Easter (School opens Wednesday 3 April)
<b>3 April</b>	Interschool Ki o Rahi (yrs 5-6)
<b>6 April</b>	Kōtuku Rerengātahi performance Oceans & Origins Kids art festival
<b>12 April</b>	End of Term 1
<b>29 April</b>	Start of Term 2

Other events may be added as the term progresses. Hubs will send notices for upcoming events through the parent portal.

## WHAT'S ON TOP? *He aha kei runga?*

### **Crocs and Jibbitz**

It seems that jibbitz have become a large temptation for some. There have been instances where unfair swapping is taking place (this we can sometimes rectify) and times when others have helped themselves to others jibbitz. This is much harder to rectify as it is usually near impossible to know who has taken them. This can often happen when children have taken their shoes off to play games at break times. If there are particularly precious jibbitz we recommend children do not have them at school. We request that if your child comes home with jibbitz that are not theirs you return them to school. We regularly remind children that showing manaakitanga and whanaungatanga is only taking what belongs to us. We also remind children to take care of their belongings.

### **Parent Contact**

We still have quite a number of whānau not connected to the app. We want to make sure nobody misses out on important information. If you need help getting connected let your child's teacher know or contact the office on 8345467 or [office@rutherfordprimary.school.nz](mailto:office@rutherfordprimary.school.nz)

## UPCOMING FUNDRAISERS

<b>6 March</b>	Easter Raffle Tickets On Sale
<b>28 March</b>	Easter Raffle Drawn
<b>8 September</b>	Brick Show

## WELCOME TO SCHOOL



Ezera Aweke

## QUOTE OF THE WEEK

***"We are what we repeatedly do. Excellence, then, is not an act but a habit" - Aristotle***



Rutherford  
Primary  
School



26 FEBRUARY 2024  
26 Hui-tanguru 2024

## WHAT'S BEEN HAPPENING AT RUTHERFORD

### *I tēra wiki - Last week*

#### Te Ahi Ora evening performances

Our tamariki had a wonderful session last week learning different techniques for using a staff. The tamariki were able to develop balance and coordination skills along with strength and control. They also learnt about different types of fire and how to be safe around fire. Thank you to whānau who also joined us at the evening performances.

### *Ngā mihi nui Te Ahi Ora!*



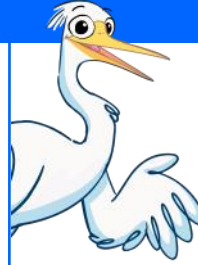
## PROFILE ON ACTIVITIES

### Music Groups

At Rutherford we are fortunate to have specialist music teacher Dylan Symonds working in our school this year. On Wednesdays and Thursdays Dylan is running music groups. At morning tea time he is taking a Xylophone group and at lunchtime he is taking a Ukulele group.

If you want to find out more about these groups email Dylan at [dylans@rutherfordprimary.school.nz](mailto:dylans@rutherfordprimary.school.nz)

## CAUGHT BEING GOOD



### Caught Being Good

Congratulations to the following children who were caught being good last week:

- Kisona Levi
- Benji Cotton
- Vanessa Tev
- Autumn Currin
- Benji Matai'a



This week our focus is to *Use Your Manners*

- Say please and thank you when required.
- Say 'excuse me' when someone is in your way.
- Say 'beg your pardon' or 'sorry' when you cannot hear someone speak.

## WHANAU READERS NEEDED

### CALLING ALL GRANDPARENTS!

Can you spare 30-60 minutes  
3 or 4 days a week?

We need volunteers to listen  
to our tamariki read.

If you are available Monday,  
Tuesday, Thursday or Friday  
between 9:15 and 10:30  
please let Arlene know at

[arlenec@rutherfordprimary.school.nz](mailto:arlenec@rutherfordprimary.school.nz)



## EVENING JUDO CLASSES

Judo classes are happening every Wednesday  
afternoon from 5:30 to 6:30 in our school hall.

The class next Wednesday will be a free have-a-go  
session for all newcomers to try out this Olympic  
sport.

Coach Johan is a 6<sup>th</sup> Dan, professional coach, and  
the owner of Nippon Judo Schools.

Feel free to contact Johan on 021-113-2105 or  
[bosjudo@hotmail.com](mailto:bosjudo@hotmail.com) if there are any questions.

Everyone is welcome to join the session on  
Wednesday afternoon.



26 FEBRUARY 2024  
26 Hui-tanguru 2024



## ATTENDANCE AT RUTHERFORD

Attending school every day unless sick makes a big difference to children's progress and social connection with their friends.

Our aim is to have all children at school at least 90% of the time. This means that children will have no more than 5 days off school each 10 week term. You will be contacted if attendance slips beyond 90%.

Please remember to contact us if your child is going to be absent. We need to code your child's roll according to the Ministry of Education's guidelines.

## SCHOOL ABSENCES

If your child is going to be absent from school for any reason please choose one of the following options:

- [Notify an absence through the Etap Parent Portal](#)
- [Phone 834 5467 and leave a message](#)
- [Or text the school cellphone 022 324 3942](#)

If the school is not informed of your child's absence/s they will be marked as truant.

## HOLIDAYS DURING TERM TIME

Please apply in writing to:

[principal@rutherfordprimary.school.nz](mailto:principal@rutherfordprimary.school.nz)

**Please also let your child's teacher know.**

Include the dates you will be absent. We will pre-code your child's attendance for those days.

These will be coded as an explained but unjustified absence.



## LATE TO SCHOOL

Students who arrive after **8.50am MUST report to the school office to sign in.**



Please make your child aware that if they arrive after the bell has gone, they must report to the office to sign in avoiding the need to get in touch with parents.

## LEAVING SCHOOL EARLY

Children are not permitted to leave the school grounds unless accompanied by a parent/caregiver.

The teacher and office staff must be informed and the child signed out before leaving the school grounds.

## CHANGE OF ADDRESS OR DETAILS

It's really important to get in touch with you in an emergency. Please let us know any changes to your address, phone number or caregivers so we can keep our records up to date.



**ezlunch.co.nz**

- |           |                       |
|-----------|-----------------------|
| Sushi Ami | Mondays and Thursdays |
| Subway    | Wednesdays            |
| Pita Pit  | Tuesdays and Fridays  |

Menu items vary in price.

Orders made online only. No cash sales.

## IMPORTANT NOTICES



### Helmets

Make sure your child wears a helmet when riding their bike or scooter to school. Bikes and scooters must be walked across pedestrian crossings and in the school grounds.

### Road safety

We remind you not to stop on yellow lines or drop off in driveways as this becomes a safety hazard for our children.

### Parking

Parents and caregivers are permitted to park at the church on Old Te Atatu Road and walk the short distance to school. Please arrange a meeting spot after school with your child/ren.

The school carpark is for staff, visitors and contractors only.

### Late to pick up your child/ren

Please phone the school office if you are stuck in traffic or are going to be late. We can arrange for your child to come to the office to wait for you. Siblings of Rutherford College students get picked up from the office.

### Dropping off lunches, hats, drink bottles

Drop belongings into the office for your child and we will call for them to collect at an appropriate time. Sometimes they may be in another class or in the swimming pool.



Rutherford  
Primary  
School



# JUNIOR RUGBY REGISTRATIONS NOW OPEN FOR 2024



**VISIT OUR WEBSITE TO REGISTER  
ONLINE TODAY OR SCAN THE QR CODE.**

Keep an eye on our social media accounts  
to get updates on pre-season events,  
weigh-ins and muster day info.



Scan the QR  
code to  
register

**Waitemata Rugby Club - 96 Swanson Road, Henderson**

✉ [Waitematajrc@gmail.com](mailto:Waitematajrc@gmail.com) 🏠 [waitematarugby.co.nz](http://waitematarugby.co.nz) 📘 [www.facebook.com/wrfcjuniors/](https://www.facebook.com/wrfcjuniors/)

## Lunch at Rutherford



We encourage 'nude lunch boxes' that contain a minimum or no food packaging. Any food packaging your child brings to school will come home again in their lunchbox at the end of the day.

Thank you for your support.

**FUNDRAISING  
MADE EASY**  
Shop with us and we  
donate 10% to  
**Rutherford  
Primary School**  
Shop online  
[www.schoolfundraisingshop.org.nz](http://www.schoolfundraisingshop.org.nz)



**8.30am**

Rutherford Primary School Hall  
**Yummy weetbix  
and milk**

Have a great start to the day!

All welcome