



KIA ORA E TE WHĀNAU/GREETINGS FAMILIES

Nau mai, haere mai. Welcome to week 3 of term 1, 2024. Our students are really enjoying the opportunities available. Each week in the newsletter we will profile one of these activities. We will also send messages on the parent portal when we have sign-ups for various activities.

This week we are looking forward to have the Te Ahi Ora program in school. We hope that you will all be able to join us at the evening performances.

WHAT'S ON TOP? He aha kei runga?

Parent Contact

Teachers will be making contact with families who have not yet connected with the app. We want to ensure that all our whānau know what is happening at school and we want to make sure we don't miss anyone so please bear with us if we contact you when you have already connected.

Staff Carpark

We ask that you please do not use the staff carpark for pick up and drop off. While it might seem convenient, it is not safe for children to walk through the carpark and it causes issues when parents are trying to get out of the driveway when children are walking past.

Kia kaha, kia maia, kia manawanui
Be Strong, be brave, be determined

Noho ora mai
Amanda Bennett
Tumuaki/Principal

WHAT'S BEEN HAPPENING AT RUTHERFORD

I tērā wiki - Last week

12 February - Whānau Picnic

Thank you to everyone who came to the meet the teachers last week, we really enjoyed connecting with families new and existing.

15 February - Pōwhiri 10.30am

We had a wonderful welcome for our new whānau last week with a fantastic turnout. We were also very privileged to unveil our new tuku-tuku panels in the hall that were gifted to us by the tamariki of the Kōtuku Rerengātahi class. Thank you to Whaea Mon, Whaea Shaz, Whaea Lee and Kōkā Rayleen who guided our tamariki to create these.



WHAT'S COMING UP AT RUTHERFORD

I tēnei wiki - This Week

22-23 February Te Ahi Ora evening performances

UPCOMING EVENTS - TERM 1

29 February School Athletics Day

11-13 March Years 4-6 North Harbour Softball

19-20 March Years 3-4 Bat First Cricket

27 March Year 6 Future Leaders Day

29 March-2 April Easter (School opens Wednesday 3 April)

6 April Kōtuku Rerengātahi performance
Oceans & Origins Kids art festival

12 April End of Term 1

Other events may be added as the term progresses. Hubs will send notices for upcoming events through the parent portal.

UPCOMING FUNDRAISERS

22-23 February Te Ahi Ora afternoon performances. sausage sizzle, drinks for sale.

8 September Brick Show

WELCOME TO SCHOOL



Charlotte Cotton, Soane Fonua, Aahil Hussein

QUOTE OF THE WEEK

"Just one small positive in the morning can change your whole day" - Dalai Lama



Rutherford
Primary
School



19 FEBRUARY 2024
19 Hui-tanguru 2024

KEI TE AHA?

What's happening at Rutherford - Profile on activities

Kapa Haka

At Rutherford we have very strong competition and non-competition groups. In Kapa Haka children learn waiata, haka, poi, technique and tikanga. We are fortunate to have the support of excellent kapa haka tutors.

We are grateful to Whaea Tiana who is currently tutoring the tamariki. Whaea Amanda is coordinating Kapa Haka, if you have any patai/ questions, email Amanda at amandab@rutherfordprimary.school.nz

In term 1, we focus on learning the basics. We start with our non-competition group. Kapa Haka is every Wednesday afternoon from 1.45pm to 2.30pm. This group is open to all children from year 2-6. Along with weekly practices we look for opportunities such as pōwhiri, school events/assemblies and community performances for children to participate in throughout the year.

In term 2, we will invite children from year 3 to 6 to trial for the competition group.

COMPUTER/MOBILE CODING LESSONS



A BRIGHT FUTURE

In coding lessons, your child will learn useful technology skills which help prepare them for success in our increasingly digital world. They'll have fun creating cool games while learning to code from expert tutors.

All skill levels welcome.

FREE TRIALS AVAILABLE

Sign up now at codingnz.com/signup

AGES

9 to 11
12 & 13
14 to 16
17 to adult

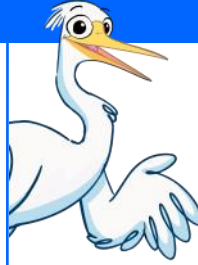
WHEN & WHERE

Online at home for 1 hour per week, at your choice of 4pm, 5pm or 6pm.



codingnz.com

CAUGHT BEING GOOD



Caught Being Good

Congratulations to the following children who were caught being good last week:

- Ezra Peake
- Evie Sinkovich
- Biemnet Zeray
- Layla Gamble
- Mila Bell



This week our focus is to *Be kind to others*

- Include others in your groups and games.
- Say please and thank you.
- Say sorry when you hurt someone by accident.

WHANAU READERS NEEDED

Can you spare 30-60 minutes 3 or 4 days a week?

We need volunteers to listen to our tamariki read.

If you are available Monday, Tuesday, Thursday or Friday between 9:15 and 10:30 please let Arlene know at

arlenec@rutherfordprimary.school.nz



DENTAL SERVICES

The Auckland Regional Dental Service (ARDS) is a Te Whatu Ora-operated service, which provides **FREE dental care to children across greater Auckland**. In order to prevent any eligible children missing out on receiving free dental care, ARDS is cross-checking their own records with school rolls.

For our children's better oral health and wellbeing, our school roll will be shared with the service as required.

To find out more information about ARDS, please visit ards.co.nz or call 0800 TALK TEETH (0800 825 583).

ATTENDANCE AT RUTHERFORD

Attending school every day unless sick makes a big difference to children's progress and social connection with their friends.

Our aim is to have all children at school at least 90% of the time. This means that children will have no more than 5 days off school each 10 week term. You will be contacted if attendance slips beyond 90%.

Please remember to contact us if your child is going to be absent. We need to code your child's roll according to the Ministry of Education's guidelines.

SCHOOL ABSENCES

If your child is going to be absent from school for any reason please choose one of the following options:

- [Notify an absence through the Etap Parent Portal](#)
- [Phone 834 5467 and leave a message](#)
- [Or text the school cellphone 022 324 3942](#)

If the school is not informed of your child's absence/s they will be marked as truant.

HOLIDAYS DURING TERM TIME

Please apply in writing to:

principal@rutherfordprimary.school.nz.

Please also let your child's teacher know.

Include the dates you will be absent. We will pre-code your child's attendance for those days.

These will be coded as an explained but unjustified absence.

LATE TO SCHOOL

Students who arrive after **8.50am MUST report to the school office to sign in.**

Please make your child aware that if they arrive after the bell has gone, they must report to the office to sign in avoiding the need to get in touch with parents.

LEAVING SCHOOL EARLY

Children are not permitted to leave the school grounds unless accompanied by a parent/caregiver.

The teacher and office staff must be informed and the child signed out before leaving the school grounds.

CHANGE OF ADDRESS OR DETAILS

It's really important to get in touch with you in an emergency. Please let us know any changes to your address, phone number or caregivers so we can keep our records up to date.




ezlunch.co.nz

Sushi Ami **Mondays and Thursdays**
Subway **Wednesdays**
Pita Pit **Tuesdays and Fridays**

Menu items vary in price.

Orders made online only. No cash sales.

IMPORTANT NOTICES

Helmets

Make sure your child wears a helmet when riding their bike or scooter to school. Bikes and scooters must be walked across pedestrian crossings and in the school grounds.

Road safety

We remind you not to stop on yellow lines or drop off in driveways as this becomes a safety hazard for our children.

Parking

Parents and caregivers are permitted to park at the church on Old Te Atatu Road and walk the short distance to school. Please arrange a meeting spot after school with your child/ren.

The school carpark is for staff, visitors and contractors only.

Late to pick up your child/ren

Please phone the school office if you are stuck in traffic or are going to be late. We can arrange for your child to come to the office to wait for you. Siblings of Rutherford College students get picked up from the office.

Dropping off lunches, hats, drink bottles

Drop belongings into the office for your child and we will call for them to collect at an appropriate time. Sometimes they may be in another class or in the swimming pool.





Rutherford
Primary
School



JUNIOR RUGBY REGISTRATIONS NOW OPEN FOR 2024



**VISIT OUR WEBSITE TO REGISTER
ONLINE TODAY OR SCAN THE QR CODE.**

Keep an eye on our social media accounts
to get updates on pre-season events,
weigh-ins and muster day info.



Scan the QR
code to
register

Waitemata Rugby Club - 96 Swanson Road, Henderson

✉ Waitematajrc@gmail.com 🏠 waitematarugby.co.nz 📘 www.facebook.com/wrfcjuniors/

Lunch at Rutherford



We encourage 'nude lunch boxes' that contain a minimum or no food packaging. Any food packaging your child brings to school will come home again in their lunchbox at the end of the day.

Thank you for your support.



8.30am

Rutherford Primary School Hall
**Yummy weetbix
and milk**

Have a great start to the day!

All welcome