



Rutherford  
Primary  
School



8 APRIL 2024  
8 Paengawhāwhāi 2024

## KIA ORA E TE WHĀNAU/GREETINGS FAMILIES

Nau mai, haere mai. Welcome to week 10 of term 1, 2024. There have been so many fabulous learning opportunities for our tamariki this term and this week is no exception.

On Thursday we will have our Celebrate learning at Rutherford assembly at 1.30pm. School will finish at the normal time of 2.50pm on Friday 12 April

This week our Whakatauki o tēnei wiki/ whakatauki of this week is;  
**'Aroha mai, aroha atu,**  
*Love received, causes love to be given*

A proverb referring to the importance of showing kindness to others. This whakatauki aligns to our school value of manaakitanga. It is particularly important to ensure we are being kind to others at this time of the term when everyone is often feeling tired.

Noho ora mai  
Amanda Bennett  
Tumuaki/Principal

Rutherford College are running wrestling training in the top gym on Wednesdays after school from 3:30 to 4:30. Pop along and check it out.

## WHAT'S BEEN HAPPENING AT RUTHERFORD

### I tērā wiki - Last week



**26  
Prizes!**

Our Easter Raffle raised

**\$1,700.00**

Thank you for all your donations, there were  
26 prizes drawn overall!

## WHAT'S COMING UP AT RUTHERFORD

### I tēnei wiki - This Week

- 11 April - Celebrate Learning at Rutherford Assembly
- 12 April - Last day of term 1 - finish at 2.50pm

### UPCOMING EVENTS - TERM 2

- 29 April First day of term 2.  
School starts at 8.50am
- 30 April Board of Trustees meeting
- 6 May Health & PE consultation starts
- 9 May New to Rutherford Pōwhiri
- 13-14 May NZSO Music Experience
- 17 May Kōtuku Rerengātahi museum trip
- 24 May Future leaders day
- 28 May Interschool Football (Year 4-6)
- 28 May Board of Trustees meeting
- 29 May Whānau open afternoon
- 31 May Staff only day (School closed)
- 3 June Kings birthday holiday (School closed)
- 25 June Rippa Rugby interschool (Year 4-6)
- 25 June Board of Trustees meeting
- 26 & 27 June Celebrate learning at Rutherford whānau meetings
- 27 June Combined schools Matariki event (Kapa Haka)
- 28 June Matariki holiday (School closed)
- 5 July End of term 2

Other events may be added as the term progresses. Hubs will send notices for upcoming events through the parent portal.

### UPCOMING FUNDRAISERS

- 8 September Brick Show

If you would like to help with fundraising please contact us at [office@rutherfordprimary.school.nz](mailto:office@rutherfordprimary.school.nz). All help is appreciated!

### ATTENDANCE MATTERS

- OVERALL TO DATE: **92%** Of the 11% of children absent,
- LAST WEEK: **89%** **3.9%** of those were absent due to illness.
- LATE TO SCHOOL: **1%**



## WHAT'S BEEN HAPPENING AT RUTHERFORD

### *I tērā wiki - Last week*

#### Ki o Rahi

On Wednesday, our Ki o Rahi event brought together students from Te Atatu primary schools in a spirited display of traditional Maori ball game prowess.

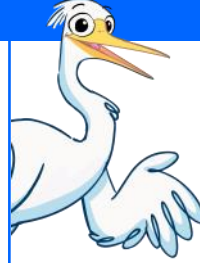
Hosted by Rutherford College, the event saw teams of kaioma and taniwha engaging in thrilling matches on the circular field divided into zones. With the small round ball (which was traditionally made from flax), known as a kī, in play, players showcased their agility and strategy, aiming to score points by touching the pou (barrier markers) and hitting the central tupu (a large barrel).

Both teams aim to score, but in different ways, and this is alternated for each 4 minute quarter. Among the participating schools, Tirimoana emerged victorious, claiming the overall top prize. However, both teams from Rutherford Primary exhibited admirable qualities of courage, resilience, and teamwork.

Special thanks to Whaea Lee for coming along and supporting one of the teams.



## CAUGHT BEING GOOD



As you know we are a PB4L school, meaning Positive Behaviour for Learning. Restorative process is part of this framework. We try hard to restore relationships between individuals at all levels.

As a kura, we have been using "Caught Being Good" tickets to promote positive behaviour and learning. From next term these tickets will have a new name based on what our tamariki would prefer to call it.

We are also moving to a different reward system, where all tamariki will be awarded at some point in time. These awards are not "things" but, "experiences" such as making pop corn, baking, and other activities.

Our PB4L team this year is Madhu, Catherine Skudder, Michelle and Paul. We are working alongside the Ministry of Education to strengthen our school values, behaviour systems and student wellbeing so our tamariki can be their best selves at our kura.



## WHANAU READERS NEEDED

### CALLING WHANAU READERS!

Can you spare any time or day during the week to help our tamariki?

We need volunteers to listen to our tamariki read.

If you are available Monday, Tuesday, Thursday or Friday between 9:15 and 10:30 please let Arlene know at

[arlenec@rutherfordprimary.school.nz](mailto:arlenec@rutherfordprimary.school.nz)



## DENTAL SERVICES



The Auckland Regional Dental Service (ARDS) is a Te Whatu Ora operated service, which provides **FREE dental care to children across greater Auckland.**

To find out more information about ARDS, please visit [ards.co.nz](http://ards.co.nz) or call 0800 TALK TEETH (0800 825 583).



## WHAT'S BEEN HAPPENING AT RUTHERFORD

### *I tērā wiki - Last week*



### News from Ōwhanga Manu Iti

To celebrate and conclude our fire learning this term we had a visit from Fire and Emergency New Zealand today. They provided our Year 1-3 ākonga with a classroom session all about helpful and hurtful fires, smoke alarms and fire safety at home.

***If we have a fire at home we yell "Fire Fire Fire!!".***

***We go outside to our meeting place, which is usually our letterbox. We ring 111.***

We got see a firefighter get dressed in protective clothing, and hear what they sound like when they are talking through their mask. Then we got to see the firetruck, which as you can imagine was a huge hit with our ākonga. The ladder is tremendously long.

Thank you for your support around our fire concept learning this term. From Te Ahi Ora, to lighting fires and roasting marshmallows, to today's firetruck, it has been an exciting term offering many new experiences. We have loved watching your children shine in new ways, building connections between the learning we do in class and the real world.

Thank you!

The Ōwhanga Manu Iti Hubs

From Kōtuku Rerengātahi

To commemorate the completion of our Ahi/Fire concept plan, our tamariki spent some amazing time with Matua Hoani and Whaea Leanne, implementing what they acquired during the term.

Matua Hoani and Whaea Leanne went over what to do if we find mati / matches or pūahi / lighters, and who we should give them to—our matua / parents or a pakeke / adult.

They also discussed smoke/auaha, the use of a auaha oro/ smoke alarm, and how to escape the auaha by saying, haere ki raro! / go down!, haere ki raro! go down and puta ki waho! / get out!

Then we visited the waka patu ahi / fire truck and sat inside the rear of the truck in their seats, feeling like a kai patu ahi / firefighter.

Ngā mihi nui ki a Matua Haoni and Whaea Leanne. Tino Miharo! Amazing!

Whaea Rayleen, Whaea Teana and Whaea Lee.







Rutherford Primary School



8 APRIL 2024  
8 Paengawhāwhāi 2024



# Save School Lunches Community Meeting

Saturday 13 April, 2 - 3.30pm  
Henderson South School Hall

Join Labour Education Spokesperson, **Jan Tinetti**, and West Auckland MPs **Carmel Sepuloni**, **Phil Twyford** and **Dr Deborah Russell**, for a conversation on the proposed cuts to the Healthy School Lunches Programme.



Authorised by Phil Twyford MP, Parliament Buildings, Wellington

## Defender Kids Mosquito Repellent Patches

Peel patch and apply to any surface or clothes (Avoid applying directly onto skin)

**KEEP MOZZIES AWAY THE FUN WAY!**

**MOSQUITO REPELLENT PATCH**

Keep away mozzies, sand flies and other nasty insects for an amazing 18 Hours.

- 100% Citronella
- 18 hours protection per patch
- Each pack contains 6 patches.
- Safe for Kids

**Kids \$8.00  
Adults \$12.00**

**FREE SAMPLES AVAILABLE FROM THE SCHOOL OFFICE**



Rutherford Primary School

FUNDRAISER



Adults Defender X Series Body Guard Xtreme.

School Fundraising Shop NZ

**FUNDRAISING MADE EASY**  
Shop with us and we donate 10% to

**Rutherford Primary School**

Shop online  
[www.schoolfundraisingshop.org.nz](http://www.schoolfundraisingshop.org.nz)

## ATTENDANCE AT RUTHERFORD

Attending school every day unless sick makes a big difference to children's progress and social connection with their friends.

Our aim is to have all children at school at least 90% of the time. This means that children will have no more than 5 days off school each 10 week term. You will be contacted if attendance slips beyond 90%.

Please remember to contact us if your child is going to be absent. We need to code your child's roll according to the Ministry of Education's guidelines.

## SCHOOL ABSENCES

If your child is going to be absent from school for any reason please choose one of the following options:

- [Notify an absence through the Etap Parent Portal](#)
- [Phone 834 5467 and leave a message](#)
- [Or text the school cellphone 022 324 3942](#)

If the school is not informed of your child's absence/s they will be marked as truant.

## HOLIDAYS DURING TERM TIME

Please apply in writing to:

[principal@rutherfordprimary.school.nz](mailto:principal@rutherfordprimary.school.nz)

*Please also let your child's teacher know.*

Include the dates you will be absent. We will pre-code your child's attendance for those days.

These will be coded as an explained but unjustified absence.

## LATE TO SCHOOL

Students who arrive after **8.50am MUST report to the school office to sign in.**

Please make your child aware that if they arrive after the bell has gone, they must report to the office to sign in avoiding the need to get in touch with parents.

## LEAVING SCHOOL EARLY

Children are not permitted to leave the school grounds unless accompanied by a parent/caregiver.

The teacher and office staff must be informed and the child signed out before leaving the school grounds.

## CHANGE OF ADDRESS OR DETAILS

It's really important to get in touch with you in an emergency. Please let us know any changes to your address, phone number or caregivers so we can keep our records up to date.




GF & vegetarian options

# ORDER school lunches ONLINE...

delivered to school



[ezlunch.co.nz](http://ezlunch.co.nz)

Sushi Ami	Mondays and Thursdays
Subway	Wednesdays
Pita Pit	Tuesdays and Fridays

Menu items vary in price.  
Orders made online only. No cash sales.  
Orders close at 9am

## IMPORTANT NOTICES



### Helmets

Make sure your child wears a helmet when riding their bike or scooter to school. Bikes and scooters must be walked across pedestrian crossings and in the school grounds.

### Road safety

We remind you not to stop on yellow lines or drop off in driveways as this becomes a safety hazard for our children.

### Parking

Parents and caregivers are permitted to park at the church on Old Te Atatu Road and walk the short distance to school. Please arrange a meeting spot after school with your child/ren.

The school carpark is for staff, visitors and contractors only.

### Late to pick up your child/ren

Please phone the school office if you are stuck in traffic or are going to be late. We can arrange for your child to come to the library to wait for you. Siblings of Rutherford College students get picked up from the library.

### Dropping off lunches, hats, drink bottles

Drop belongings into the office for your child and we will call for them to collect at an appropriate time. Sometimes they may be in another class or in the swimming pool.